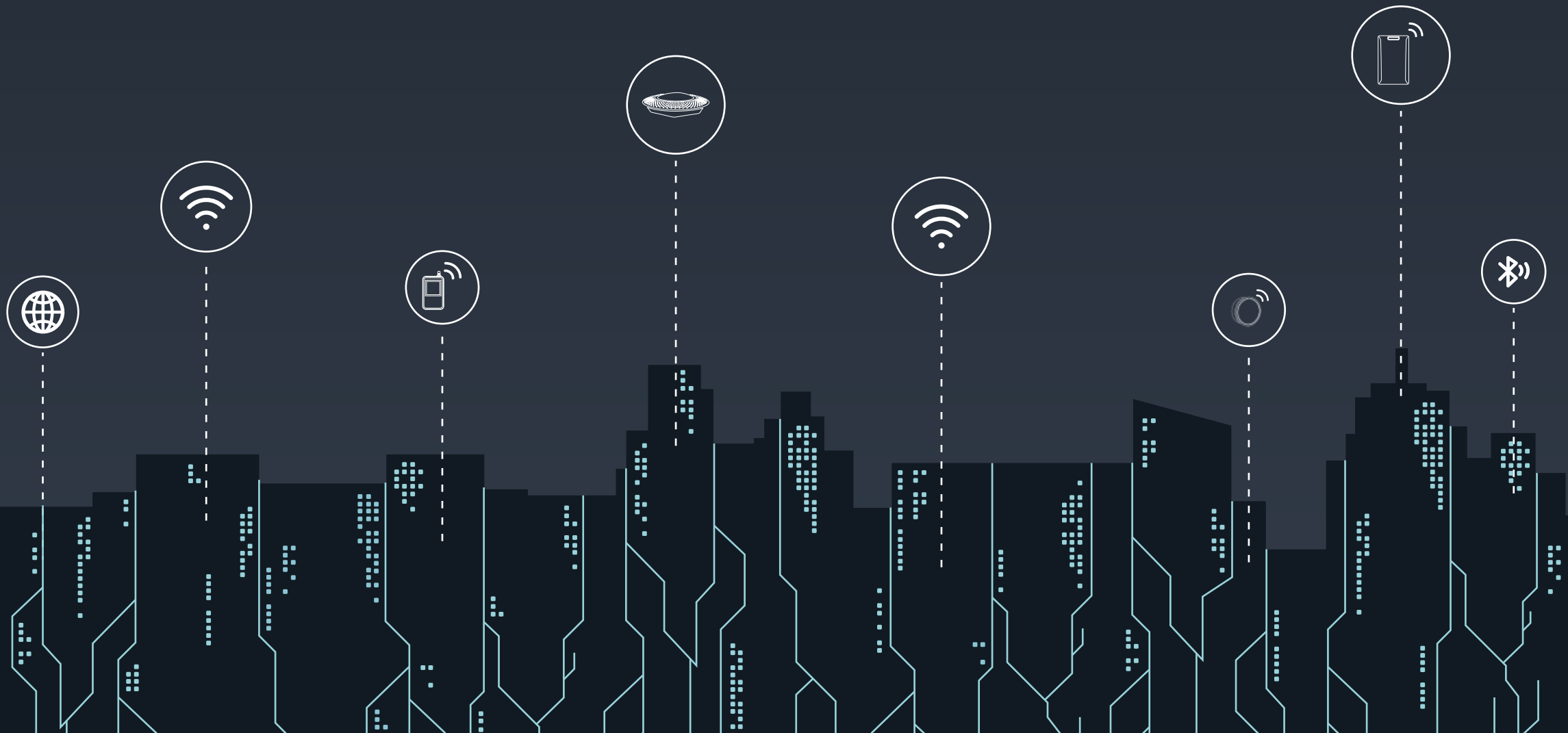




BARBARY BLUETOOTH LOW ENERGY BEACON & SENSOR & GATEWAY

All For Your Own IoT Innovation

Update Date: 06.2022

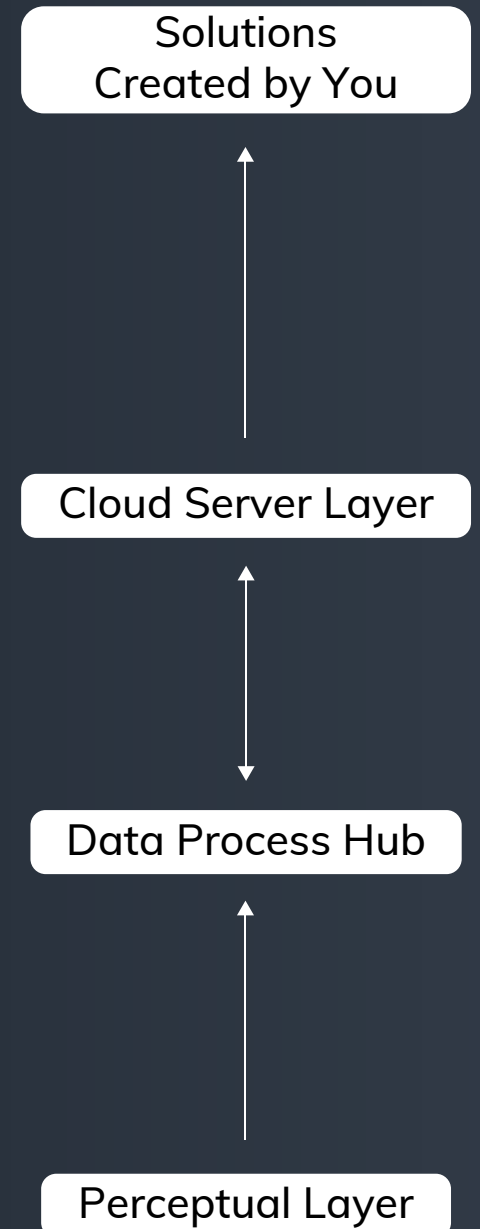
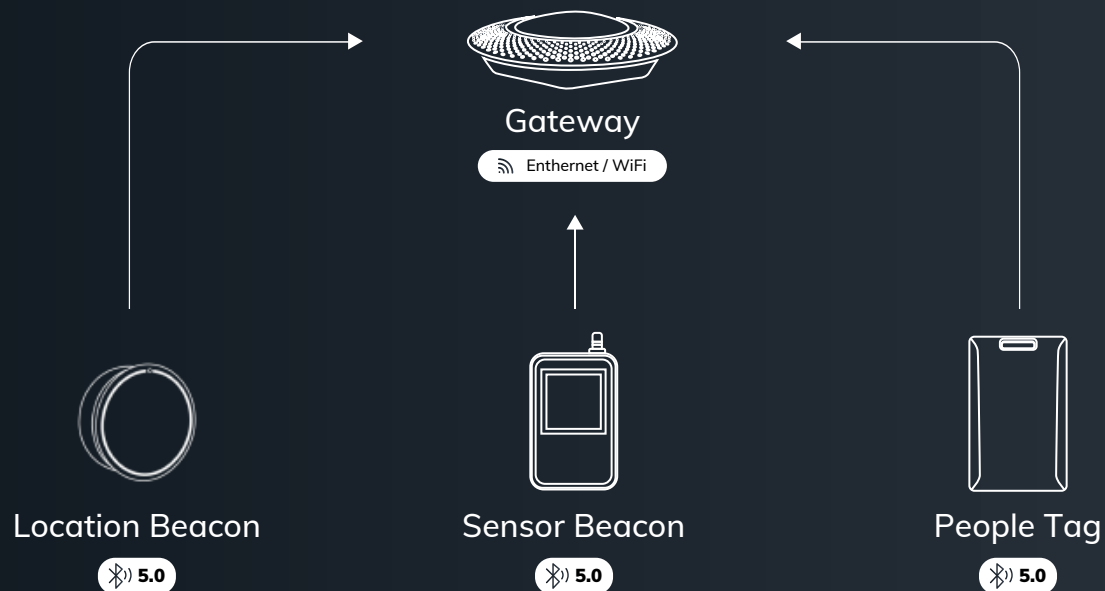


Interneting every object

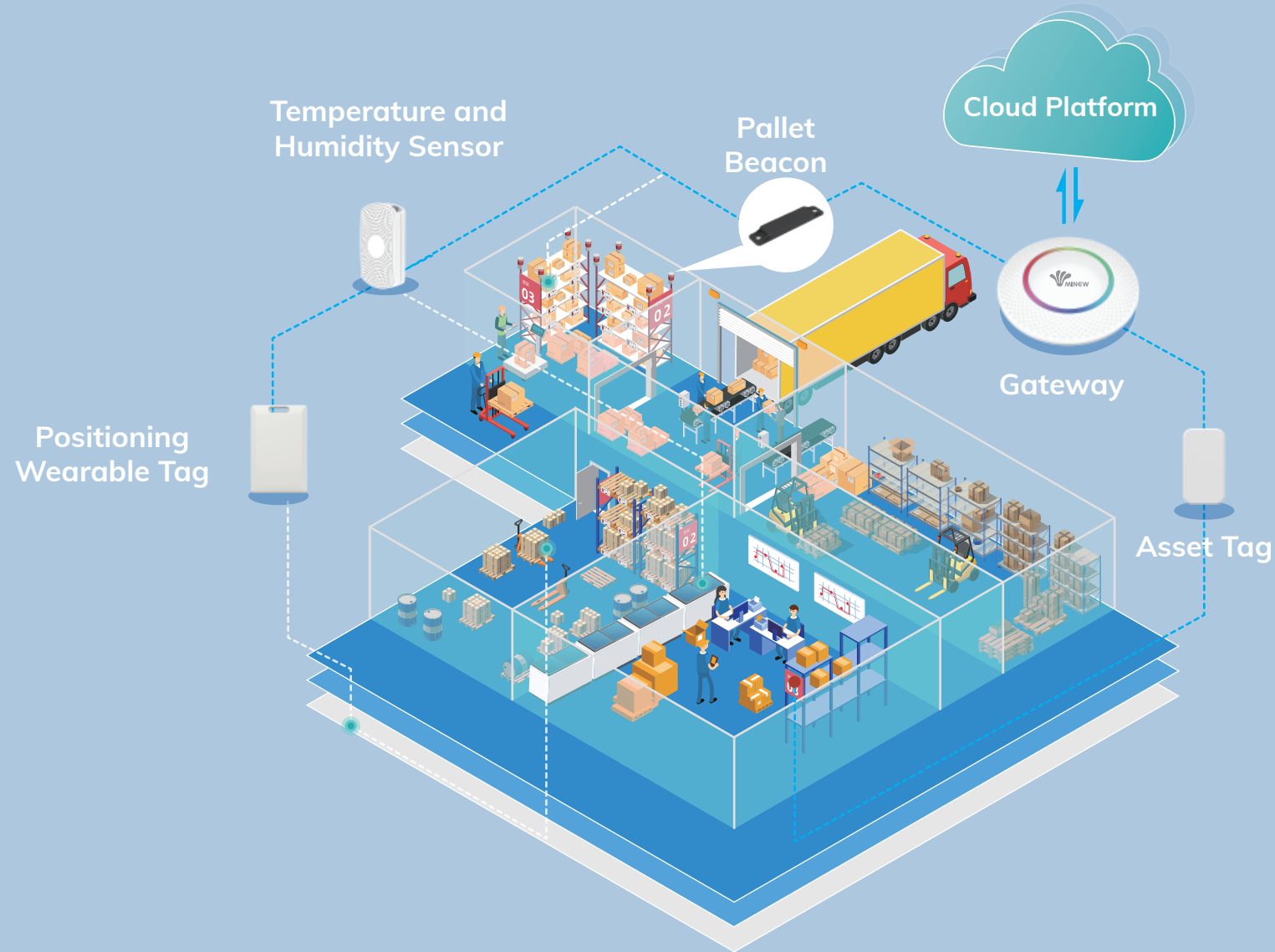
Innovation is the key for Minew. We have created countless new products and inspiring innovative ideas in IoT field ever and again since 2007. We've been working on fundamental research to overcome technical barriers and customer-driven applications to create products that cross over limits.



Automate and advance your solutions



Smart Logistic / Warehouse



Highlights

Supply chain tracking & monitoring

Indoor positioning

Asset management

Temperature & Humidity monitoring

Personnel positioning

IoT Starter Kit – MWS

Highly recommended for smart warehouse

IoT Starter Kit MWS is aimed at providing you with a cost-effective and reliable solution for warehouses and cold storage, including everything you need for asset management, cargo tracking, warehouse personnel positioning, and environmental sensing and monitoring.

PRE-ORDER NOW



- ✓ Bluetooth® LE & Wi-Fi/ETH Gateway
- ✓ Temperature & Humidity Sensor
- ✓ Positioning Wearable Card
- ✓ Asset Tag
- ✓ Pallet Beacon



Inventory management



Personnel management

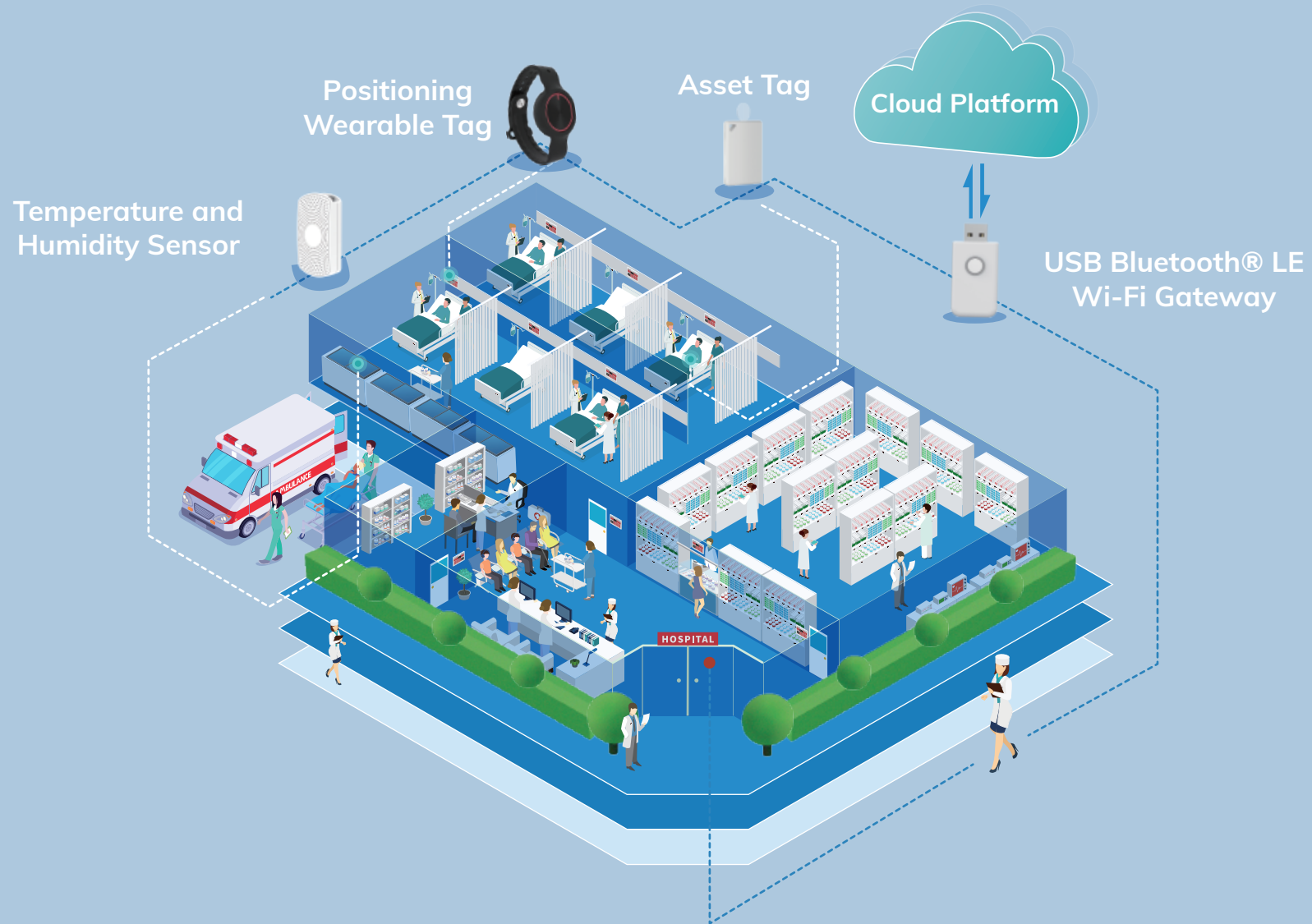


Environmental monitoring



Warehouse management

Smart Healthcare



Highlights

One-button SOS alarm

Nursing for priorities

Indoor positioning

Asset management

Environmental monitoring

Data interaction

Appointment Navigation

IoT Starter Kit – MHS

Highly recommended for smart healthcare

IoT Starter Kit MHS ensures a cost-effective healthcare solution aimed at accelerating the deployment and enhancing the advancement of smart healthcare, with everything you need in the Kit for patient safety and positioning, medical facility management, and route navigation.

PRE-ORDER NOW



- ✓ USB Bluetooth® LE Wi-Fi Gateway
- ✓ Temperature & Humidity Sensor
- ✓ Positioning Wearables
- ✓ Asset Tags



Patient Care



Security & Privacy
Protection

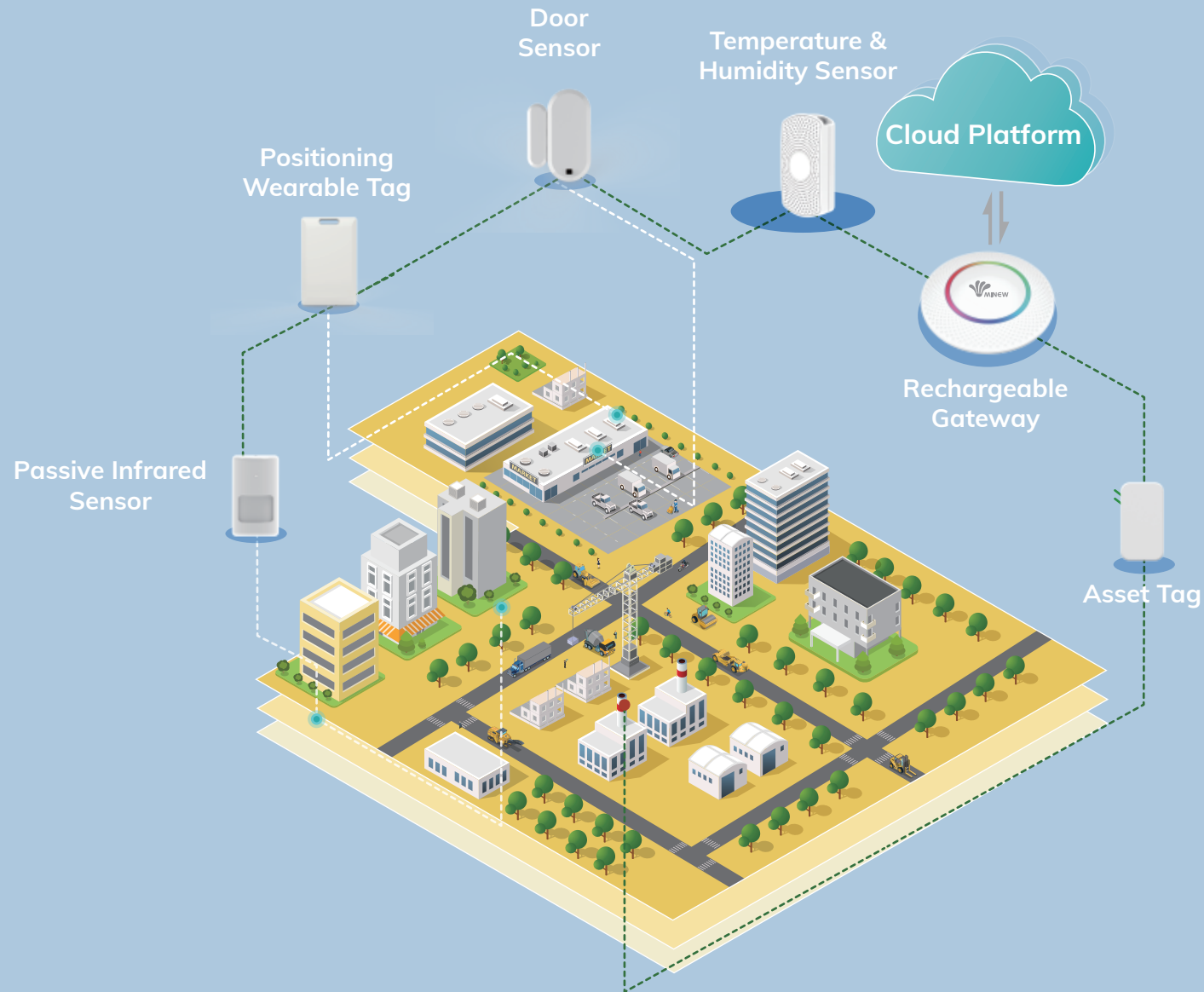


Healthcare
Equipment Management



Route Navigation

Smart Office



Highlights

Access control

Occupancy analysis

Asset management

Database construction

Indoor positioning

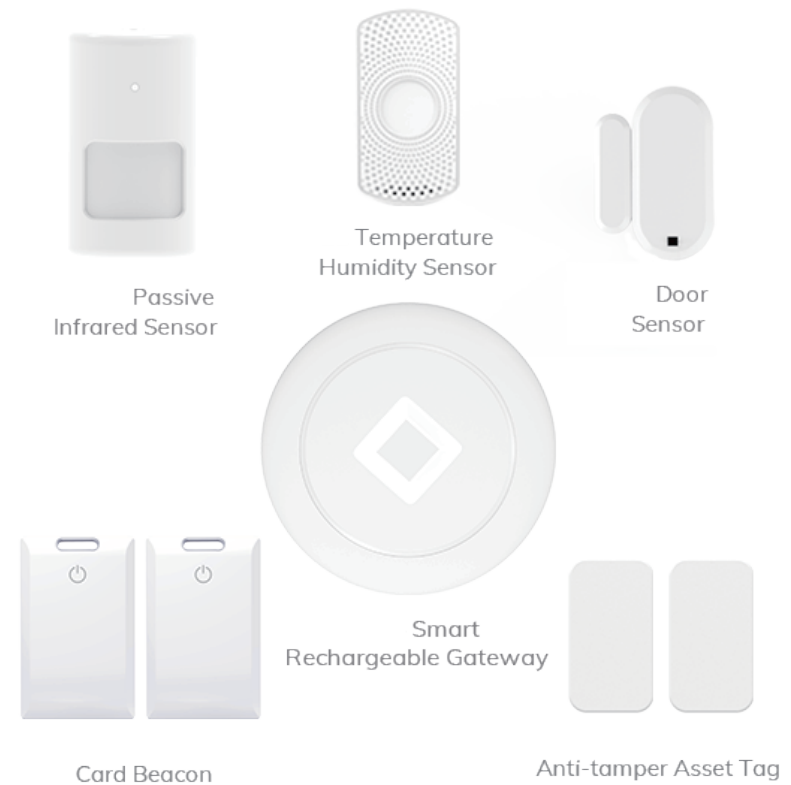
Personnel management

IoT Starter Kit – MOS

Highly recommended for smart office

Smart Space, Smart Office in particular, is created convincingly by equipping the workplace with interconnected IoT Starter Kit MOS that leverages IoT technologies and devices for indoor environment monitoring, employee and work asset management, and workspace utilization.

PRE-ORDER NOW



- ✓ Rechargeable Gateway
- ✓ Temperature & Humidity Sensor
- ✓ Passive Infrared Sensor
- ✓ Door Sensor
- ✓ Positioning Wearables
- ✓ Asset Tags



Environment Management



Door/Window Monitoring



Workplace Utilization

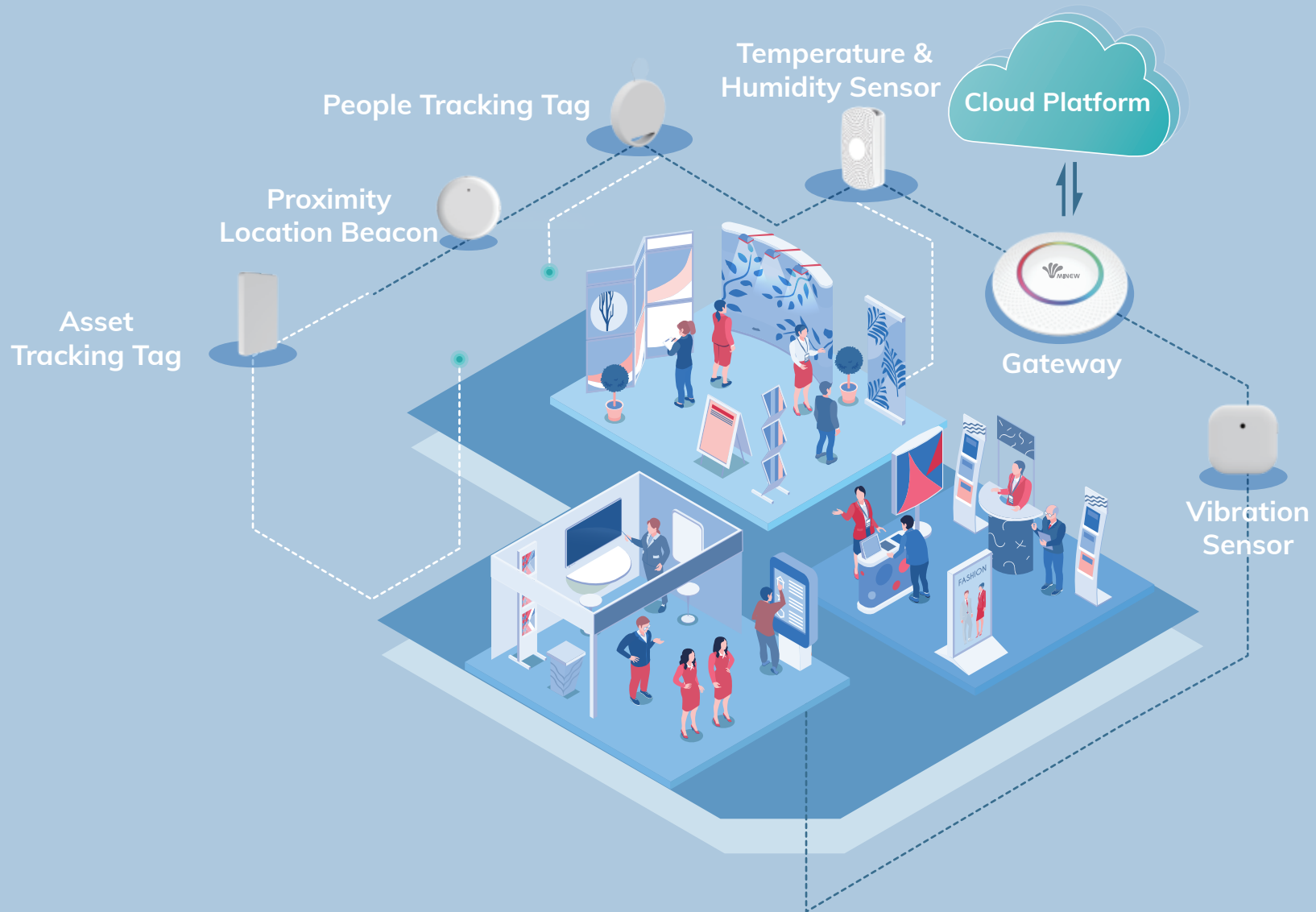


Employee Management



Asset Management

Smart Venue



Highlights

Visitor counting and positioning

Route planning and wayfinding

Temperature and humidity monitoring

Asset vibration detection

Traffic analysis

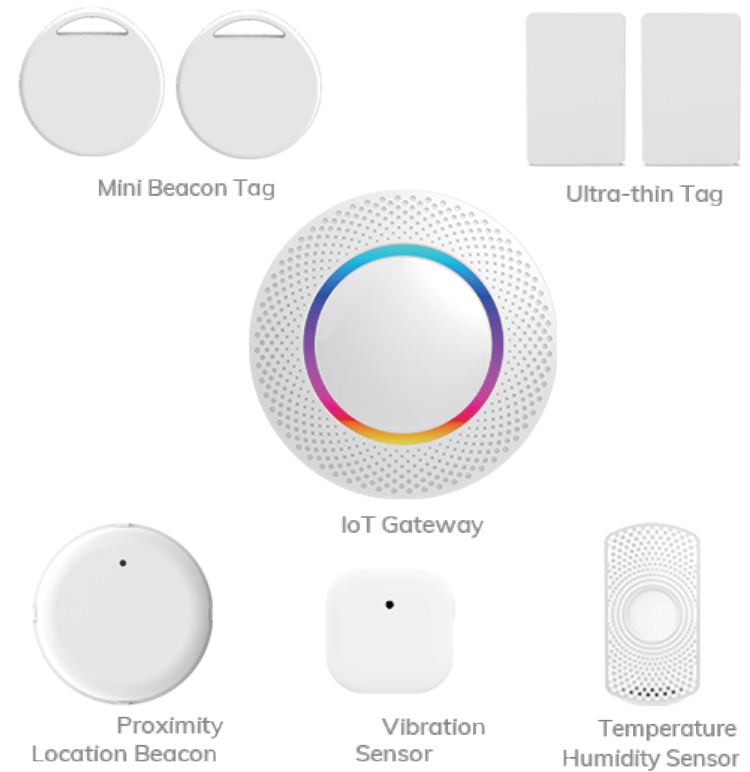
Proximity marketing

IoT Starter Kit – MVS

Highly recommended for smart Venue

IoT Starter Kit MVS can be used to accelerate the venue intelligent transformation of achieving better management and meeting users' customized needs. It includes everything you need for indoor route navigation, environment monitoring, personnel management, and more.

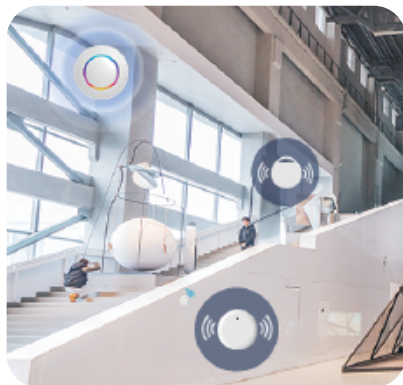
PRE-ORDER NOW



- ✓ Bluetooth® LE Wi-Fi Gateway
- ✓ People Tracking Tag
- ✓ Asset Tracking Tag
- ✓ Proximity Location Beacon
- ✓ Vibration Sensor
- ✓ Temperature & Humidity Sensor



Visitor management



Indoor navigation



Environment and
asset management



Traffic analysis



Proximity marketing

Product Collections

To get better option



Bluetooth Beacon



Config. App SDK
available



Demo cloud
platform & API
available



Android & iOS
systems
compatible



OED / ODM support
(logo, color, firm-
ware, etc)



Model Name	BBR-ND-ULR	BBR-VBS	BBR-RSBC	BBR-CTBC	BBR-PSBC	BBR-DEBC	BBR-RBBC
Dimensions	72x72x23mm	72x72x23mm	100x100x25mm	Φ50x20.5mm	Φ39x15.5mm	57.8x40.6x17.5mm	73.8x47x24.5mm
SoC	BLE 5.1 & nRF52833 (nRF52834 Optional)	BLE5.0, nRF52	BLE5.0, nRF52	BLE5.0, nRF52	BLE5.0, nRF52	BLE5.0, nRF52	BLE5.0, nRF52
Protection	IP67 Waterproof & Dustproof	IP65 water & dust-proof	IP68 waterproof IK08 shockproof	/	IP67 waterproof	IP67 waterproof	IP66 water & dust-proof
Battery	Lithium; 10800mAh	AA Battery Replaceable	Lithium battery Replaceable	Lithium battery Replaceable	CR series Replaceable	CR series Replaceable	AA battery / Lithium battery (Optional) Replaceable
Battery Life (Ref.)	10 Years	5 years	3 years	5 years	3 years	3 years	5 years
Broadcast Range (Ref.)	600m or more	240m	30m (Open area) / 80m (Hang in the air)	120m	120m	120m	200m
Built-in Sensor (Optional)	Accelerometer Optional	/	/	/	/	/	/

Bluetooth Beacon



Config. App SDK
available



Demo cloud
platform & API
available



Android & iOS
systems
compatible



OED / ODM support
(logo, color, firm-
ware, etc)



Model Name	BBR-ILBC	BBR-PLBC	BBR-PRBC	BBR-LTBC	BBR-AST	BBR-UTBC
Dimensions	73.5x44.8x24.2mm	116.1x25.2x9.2mm	69.6x47.6x24mm	42.5x23.5x5.3mm	36.5x23.7x5mm	36.5x23.5x3.5mm
SoC	BLE5.0, nRF52	BLE5.0, nRF52	BLE 5.0, nRF52	BLE 5.0, nRF52	BLE 5.0, nRF52	BLE 5.0, nRF52
Protection	/	IP65 waterproof & dustproof IK08 shockproof	IP68 waterproof IK09 shockproof	IP65 waterproof	/	/
Battery	AA battery / Lithium battery (Optional) Replaceable	CR series	Lithium battery Replaceable	CR series	CR series	CR series Replaceable
Battery Life (Ref.)	6 years	40 months	44 months	1-3 years (Depends on use conditons)	200 days	3 months
Broadcast Range (Ref.)	200m	100m	70m	50m	60m	50m
Built-in Sensor (Optional)	/	/	Accelerometer Temperature Sensor	Light sensor	/	/

Bluetooth Beacon



Config. App SDK
available



Demo cloud
platform & API
available



Android & iOS
systems
compatible



OED / ODM support
(logo, color, firm-
ware, etc)



Model Name	BBR-CTBC	BBR-MNBC	BBR-MNBC2	BBR-MNBC3	BBR-USBT	BBR-USBT1
Dimensions	Φ26x5mm	42.1×23.8×3.5mm	37.1×23.8×3.5mm	31.1×30×5.5mm	18×14×6mm	28.5×15.9×7.5mm
SoC	BLE 5.0, nRF51	BLE 5.0	BLE 5.0, nRF51	BLE 5.0	BLE 5.0, nRF52	BLE 5.0, nRF51
Protection	/	/	/	/	/	/
Battery	CR series Replaceable	CR series Replaceable	CR series	CR series	/	/
Battery Life (Ref.)	3 months	3 months	3 months	3 months	/	/
Broadcast Range (Ref.)	50m	50m	50m	50m	80m	100m (Open area)
Built-in Sensor (Optional)	/	/	/	/	/	/

Smart Wearables



SOS button for emergency



Cut-off alert for quarantine



Social distancing awareness



Recyclable & Economical



Model Name	BBR-MDWB	BBR-BTWB	BBR-SCDT	BBR-QTWB	BBR-EMBT
Dimensions	36.2×26.1×7.5mm	Φ35.9×11mm(Main body)	250×20.5×16mm	250×36×4.2mm	Φ38×10.5mm(main body) 270×41×11.7mm(wristband case) 47×40×11.7mm(hanging case)
SoC	BLE5.0, nRF52	BLE 5.0, nRF52	BLE 5.0, nRF52	BLE 5.0, nRF52	BLE 5.0, nRF52
Protection	IP66 water & dust-proof	IP67 water & dust-proof	IP67 water & dust-proof	IP67 water & dust-proof	IP66 waterproof
Battery	CR series	CR series Replaceable	Rechargeable lithium polymer battery	CR series	Rechargeable lithium polymer battery
Battery Life (Ref.)	8 months	12 months	/	3 months	About 60 days (10 key events per day)
Broadcast Range (Ref.)	80m	90m	2m	80m	100m
Built-in Sensor (Optional)	/	Accelerometer	Accelerometer	/	Accelerometer

Smart Wearables



Hidden
programmable
button



Multiple
wearing styles



NFC
available



OED / ODM sup-
port (logo, color,
firmware, etc)



Model Name	BBR-WBBC	BBR-CDBC	BBR-KCBC
Dimensions	42.3×31×11.6mm	85.5×54×4.5mm	Φ35×8mm
SoC	BLE 5.0, nRF52	BLE 5.0, nRF52	BLE 5.0, nRF52
Protection	/	IP65 water & dust-proof	/
Battery	CR series	Li-MnO2 battery 800/500mAh (optional)	CR series
Battery Life (Ref.)	8 months	2 / 1.5 years	5 months
Broadcast Range (Ref.)	50m	100m	70m
Built-in Sensor (Optional)	/	Accelerometer	/

Sensor Tag



Temperature &
Humidity monitoring



Utmost security
with door magnet



Ambient light
detection



Movement
detection



Model Name	BBR-VTSS	BBR-PIS	BBR-THS	BBR-LTS	BBR-THSS	BBR-DSS	BBR-AST
Dimensions	36.6x36.6x9.7mm	90x52x38mm	70.6x38x17.8mm	52.6x23.7x5.3mm	81x45x22mm 1095x45x22mm	55x26.2x13mm (main body) 38.5x12.5x11mm (magnet)	36.5x23.7x5mm
SoC	BLE5.0, nRF52	BLE5.0, nRF52	BLE5.0, nRF52	BLE 5.0, nRF52	BLE 5.0, nRF52	BLE 5.0, nRF52	BLE 5.0, nRF52
Protection	/	/	IP66 waterproof	IP65	IP66 water & dust-proof	/	/
Battery	CR series / Replaceable	AA series / Replaceable	Li-Fe battery / Alkaline battery Replaceable	CR series	Lithium battery	CR series	CR series
Battery Life (Ref.)	12 months	2 years	3 years	1 year	2 years	13 months	200 days
Broadcast Range (Ref.)	/	10m, 90° (detection range)	100m	50m	100m	100m	120m
Built-in Sensor (Optional)	Vibration sensor	PIR, Accelerometer, Temperature & Humidity sensors	Temperature & Humidity sensor	/	Temperature & Humidity sensor	Magnetic sensor	Accelerometer

IoT Gateway



USB Powered &
Portable



High Throughput &
Data Filterable



Strong Compatibility
& Security

New !



USB Mini Gateway

Your Portable Partner for Tags.

Gateway is a plug-and-play Bluetooth® Wi-Fi gateway independently developed by Minew, which is used for the detection and data collection of Bluetooth® LE devices. The collected Bluetooth device signals are encapsulated into JSON packets and transmitted through Wi-Fi. Users can monitor and locate Bluetooth devices on the cloud platform to manage personnel, facilities, assets, and environments remotely. A system with MG3 can lower the cost and improve efficiency while maintaining precision hence being deployed in logistics, health-care, office, and other scenarios.

[Please contact our sales team for the specification and sample to get started.](#)

IoT Gateway



Rechargeable
2,000mAh Battery



Flexible
Installation



Easy
configuration

New !



Smart Rechargeable Gateway

Less Interruption More Flexibility.

Gateway is a rechargeable Bluetooth® WiFi gateway developed by Minew that can be used for data collection and monitoring of Bluetooth® LE devices. MG4 carries a replaceable battery and can operate without a power cord. It sends data by WiFi in JSON format and saves data on board when the network is interrupted. MG4 can assist in personnel and asset management to achieve operation optimization, higher efficiency, and lower cost.

[Please contact our sales team for the specification and sample to get started.](#)

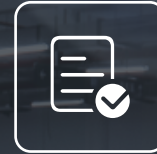
IoT Gateway



BLE 5.0



Multiple Cloud platforms, AWS, Azure, ARM mBed, etc



HTTP / MQTT / TCP Protocols



WPA 2.0 Enterprise-class Encryption, 802.1x auth



TF Card & U Disk for Saving Data When Disconnected



Model Name	BBR-GW-BLE5	
Wireless	Bluetooth 5.0, nRF52	WiFi: IEEE802.11b/g/n
Size	150x150x36mm	
SoC	BLE 5.0, nRF52	
Broadcast Range (Ref.)	300m	
Protocol	HTTP(SSL / TLS)/MQTT(SSL / TLS & Proxy) / TCP	
Communication	Bluetooth 5.0 to WiFi / Ethernet	
Power Supply	Adapter / PoE	
Firmware Upgrade	OTA / USB disk / LAN	
Certificate	CE, FCC, REACH, TELEC, Bluetooth® QDID / EPL	



+66 21180644



sale@falco.co.th



www.falco.co.th



store.falco.co.th



47/319, 5th floor, KaiTak Building, Popular Road, Ban Mai Subdistrict, Pak Kret District Nonthaburi Province, 11120 Thailand TaxID. 0135558013787